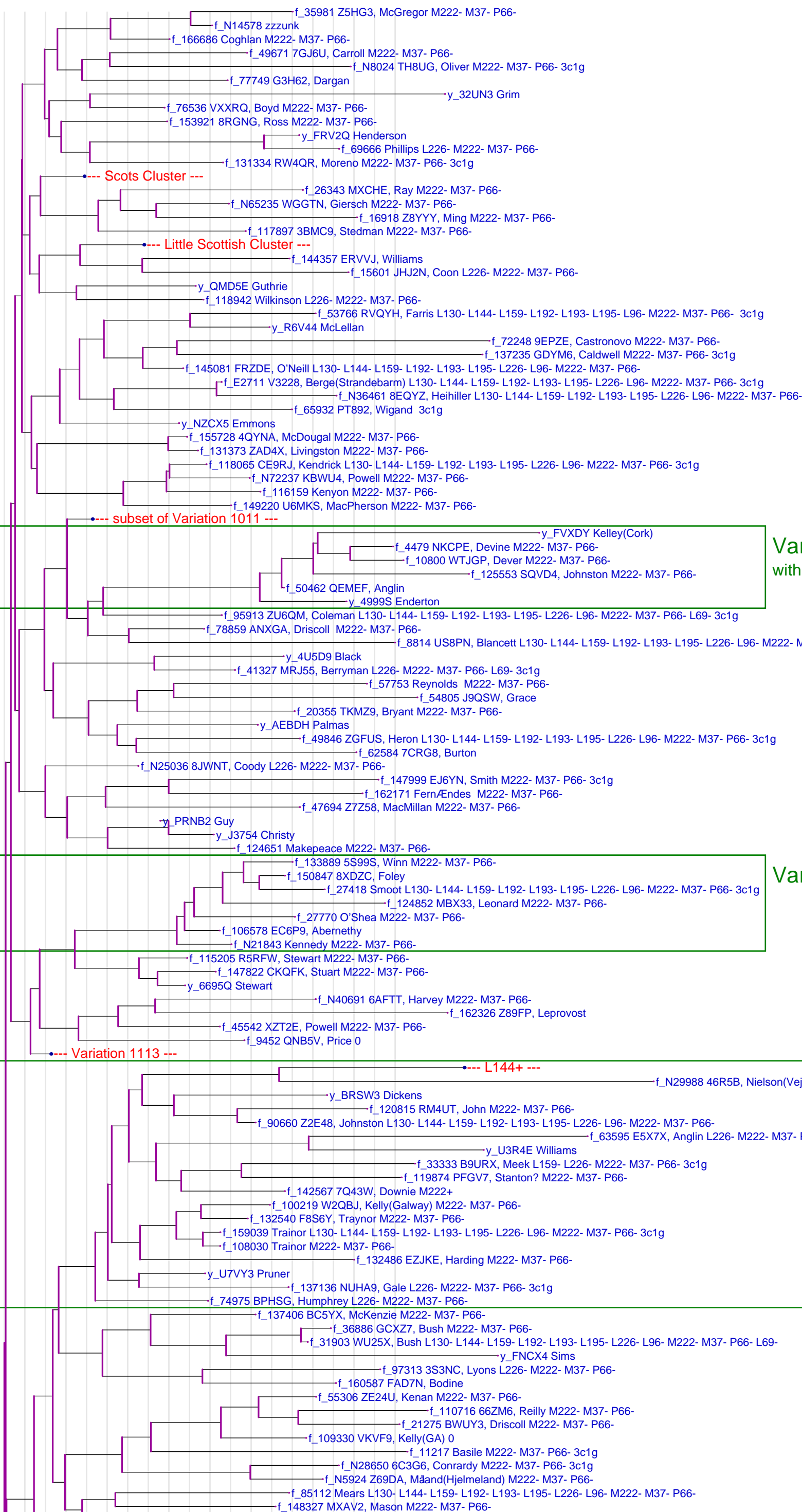


R-L21



---- Scots Cluster ----

---- Little Scottish Cluster ----

---- subset of Variation 1011 ----

Variation 1113-D-2
with Mr. Kelley also

Variation 1310-T4

---- Variation 1113 ----

---- L144+ ----

Possible 21-24 Cluster
DYS 413a <= 21 and
DYS 481 >= 24

R-L21



Variation 1830-W1-A

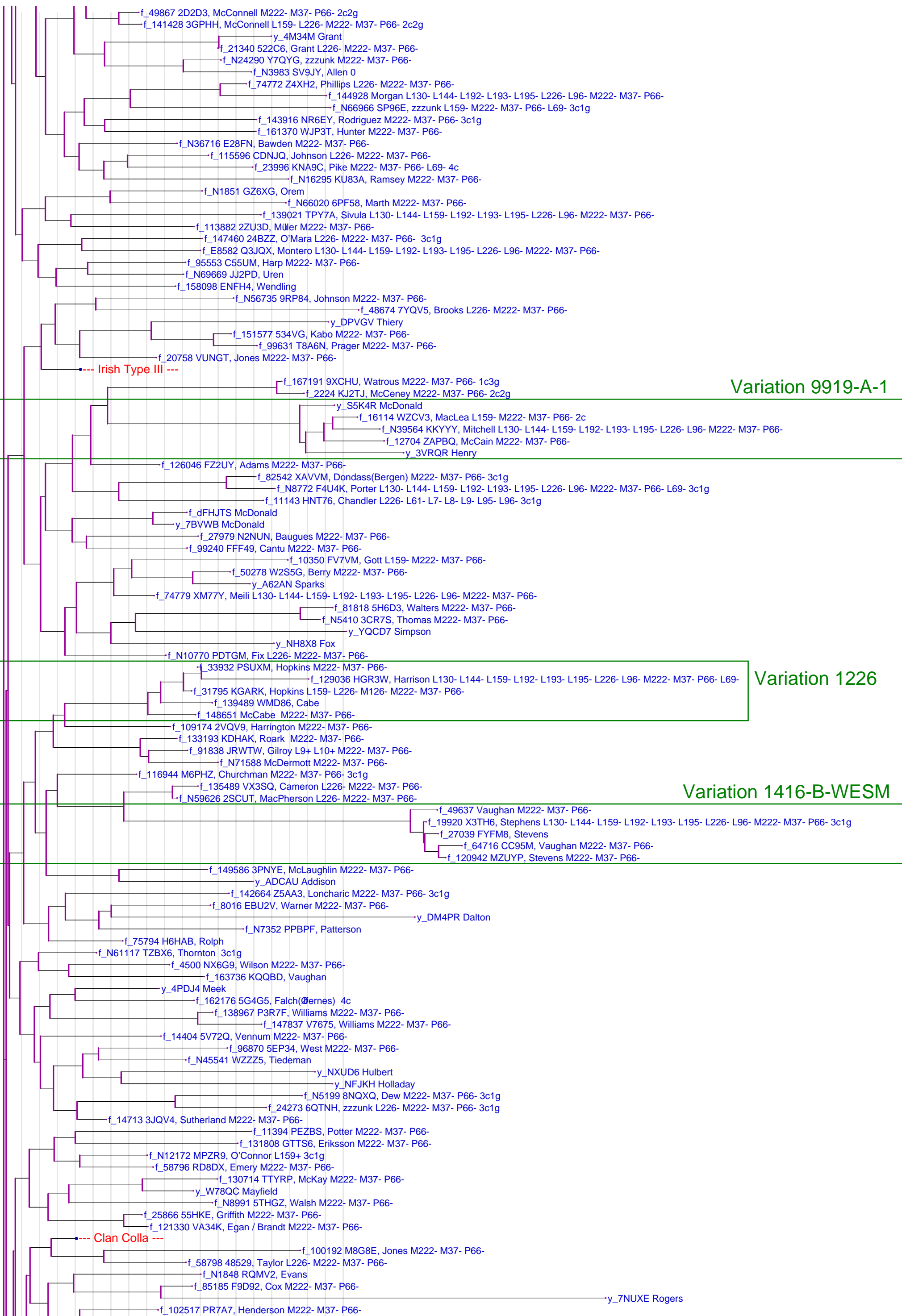
Variation 1410

Variation 1113-B-2
with some 1113-B

Variation 1113-C-2-R
with some other 1113s

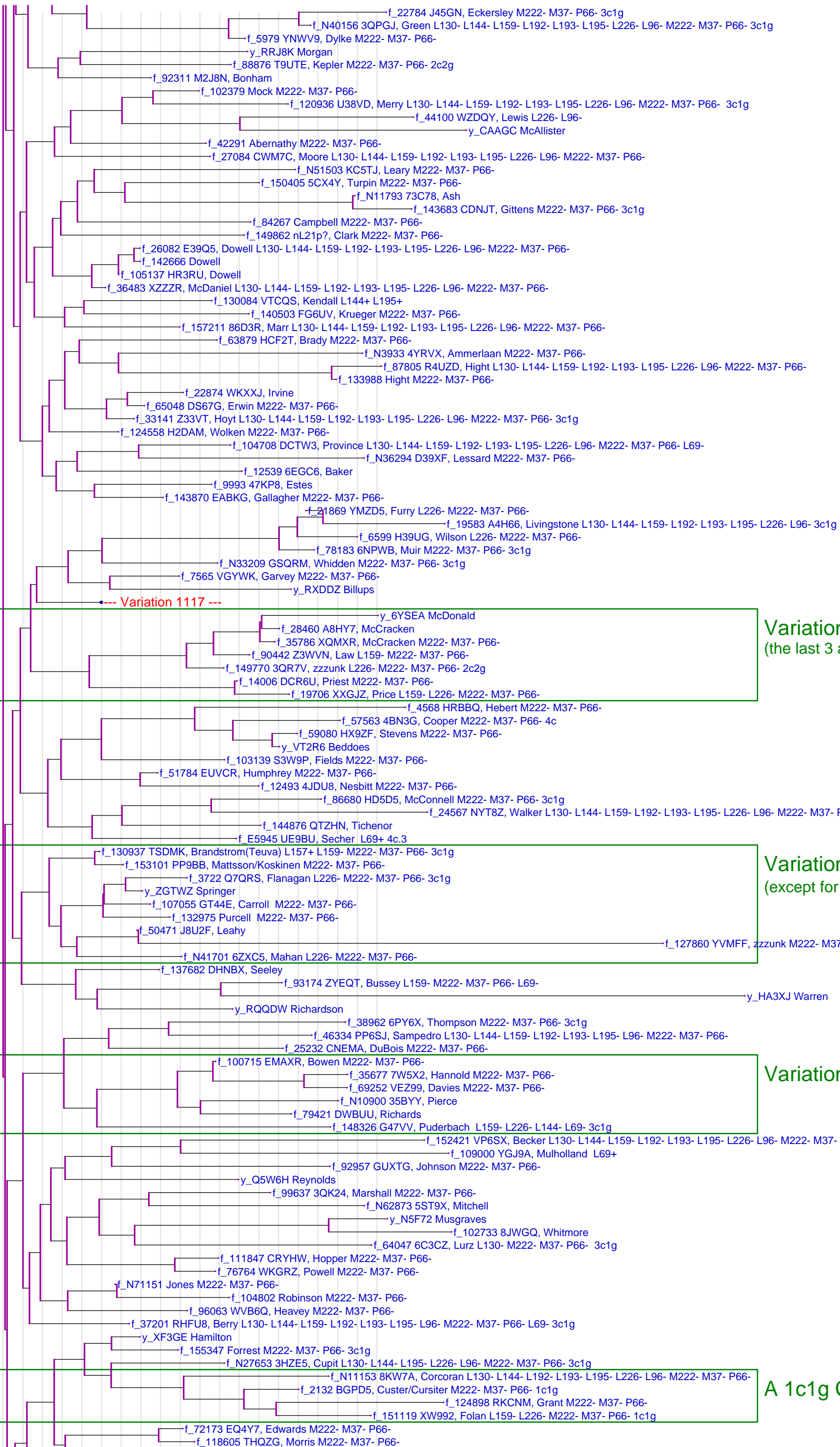
The rule separation is 10 generations.

R-L21



The rule separation is 10 generations.

R-L21



Variations 1416 & 1810-W2
(the last 3 are in fact 1810-W2)

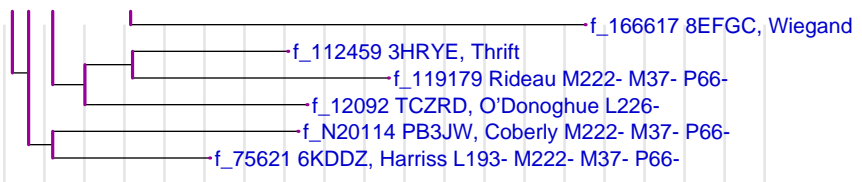
Variations 1528 & 49211
(except for f127860)

Variation 1211

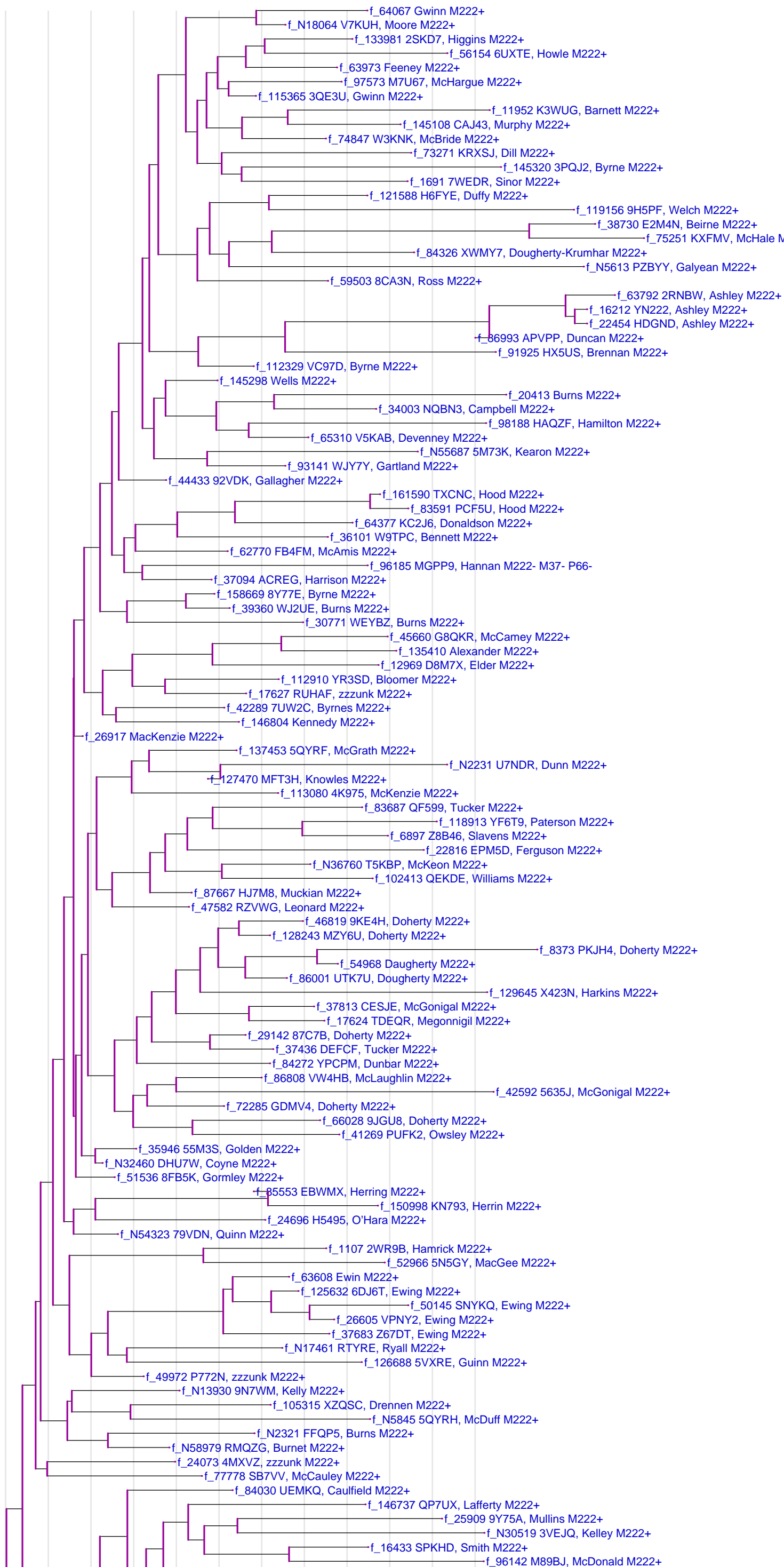
A 1c1g Cluster

The rule separation is 10 generations.

R-L21

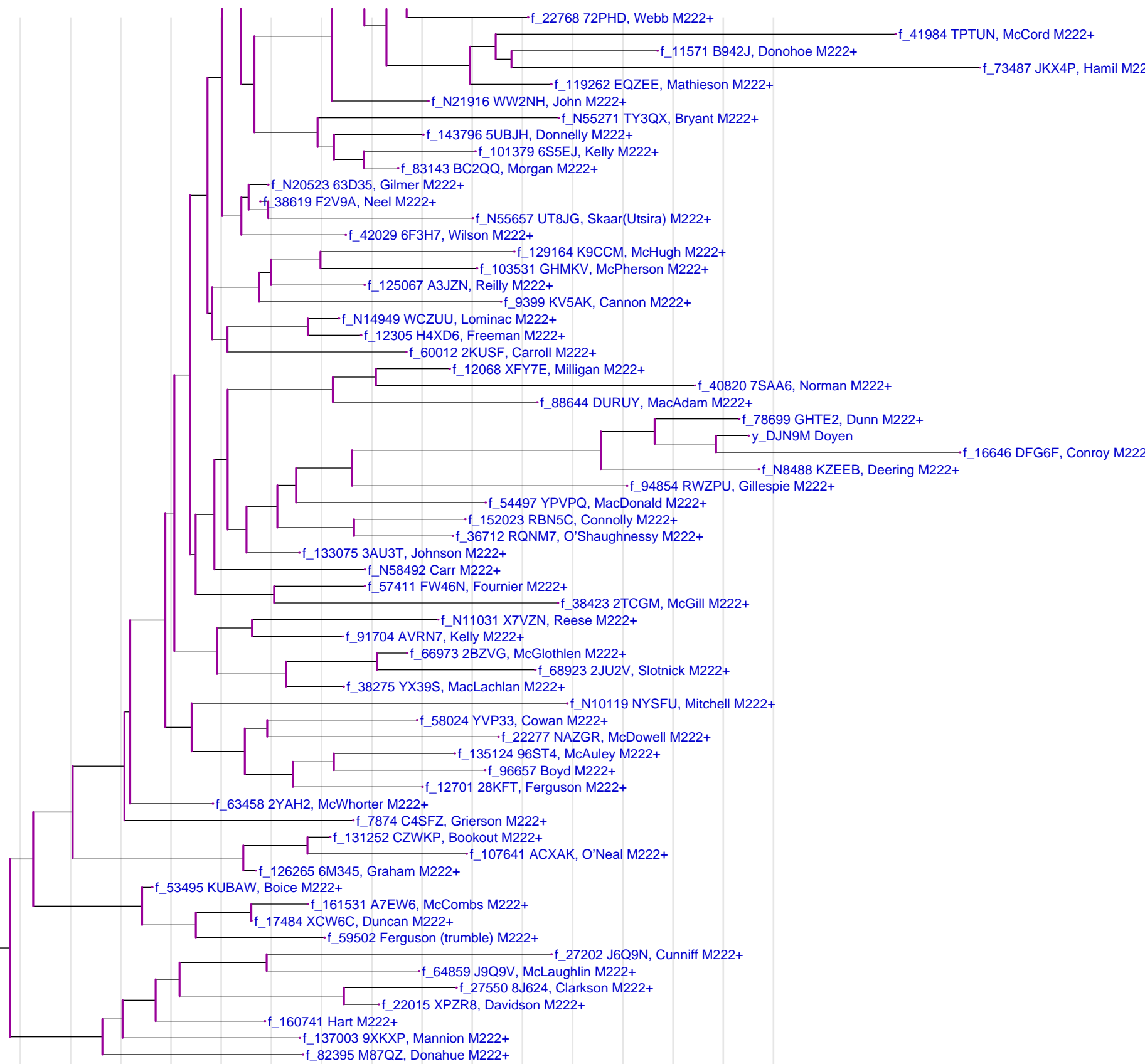


M222+

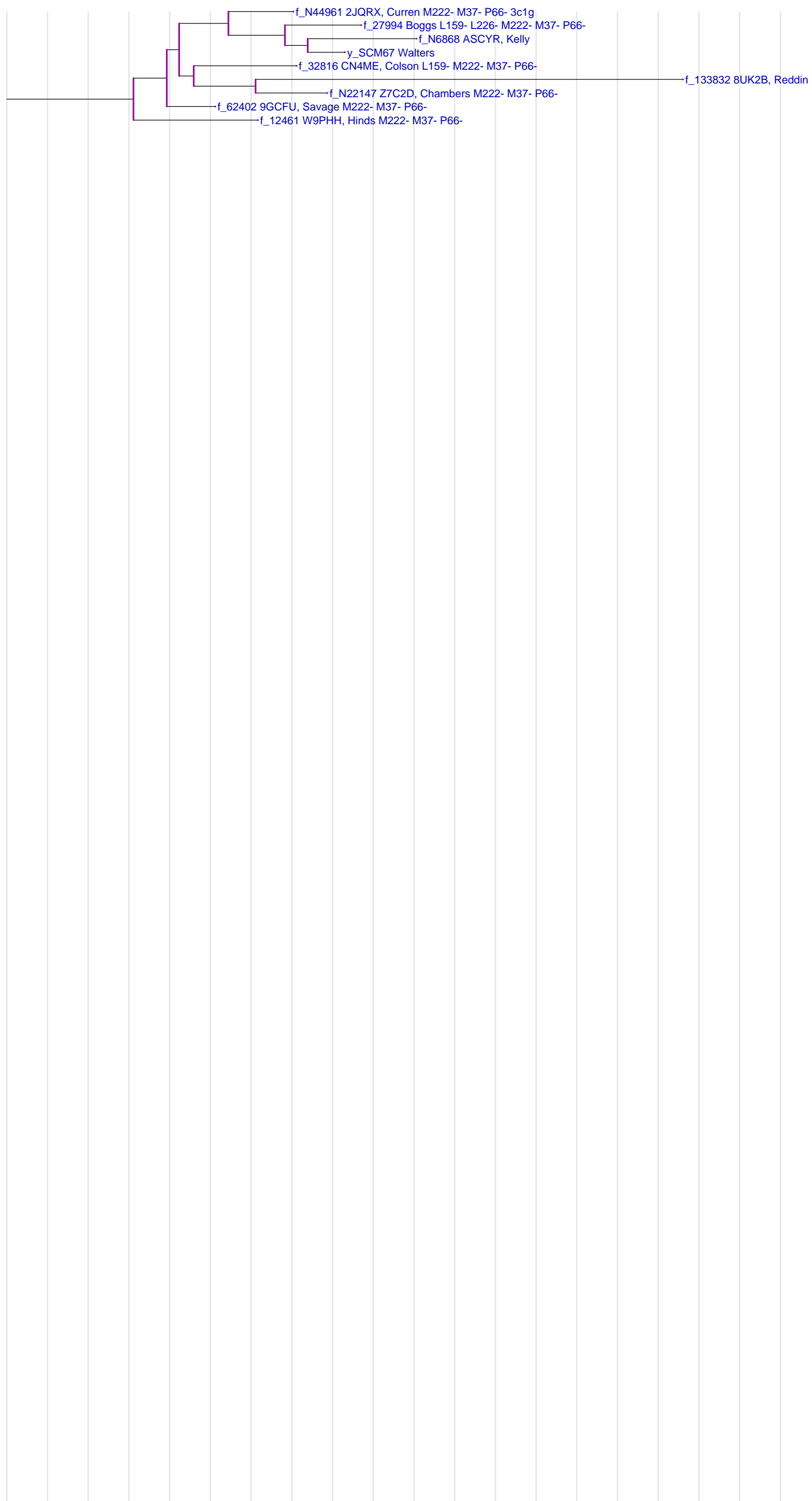


The rule separation is 10 generations.

M222+

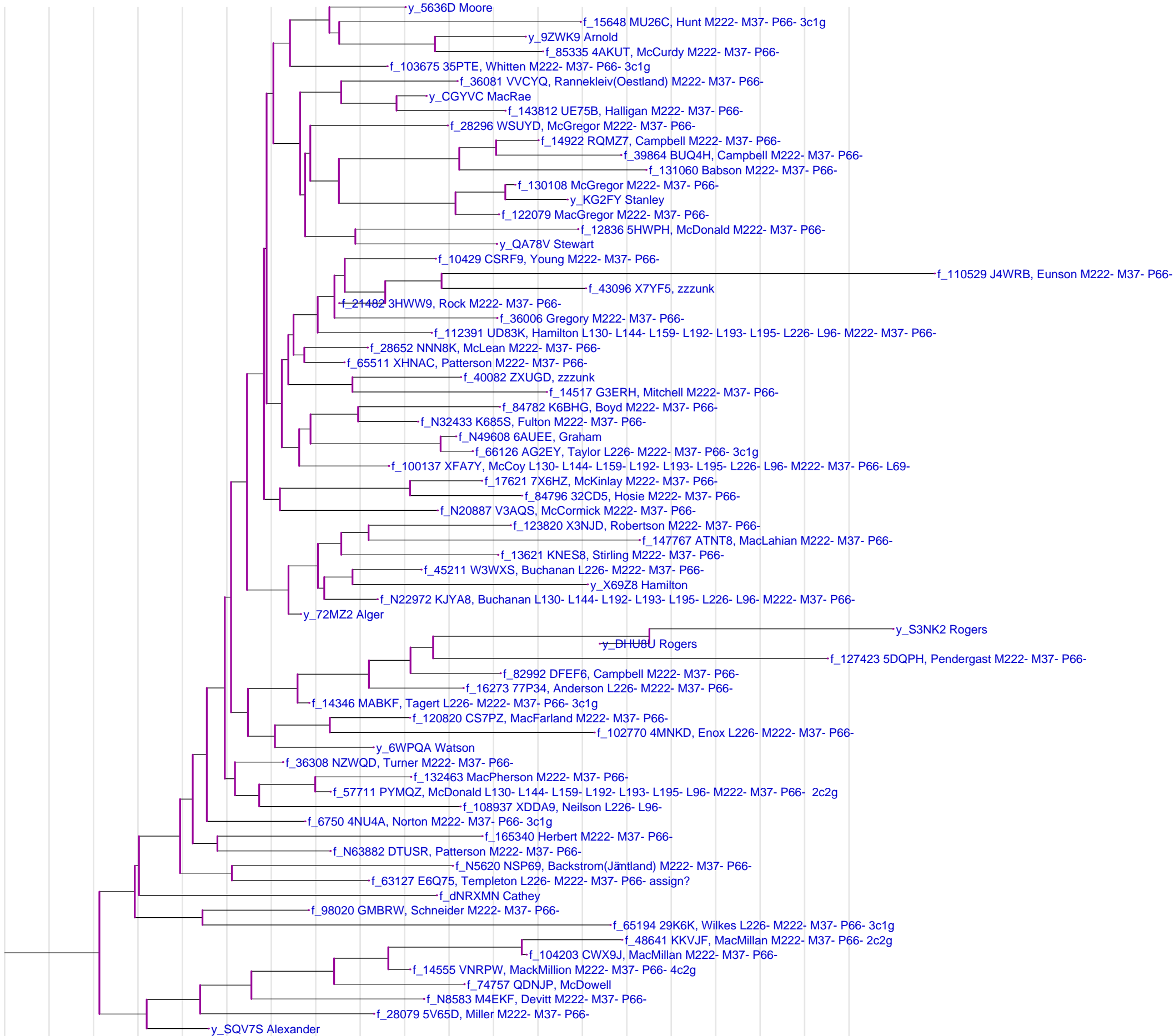


Little Scottish Cluster



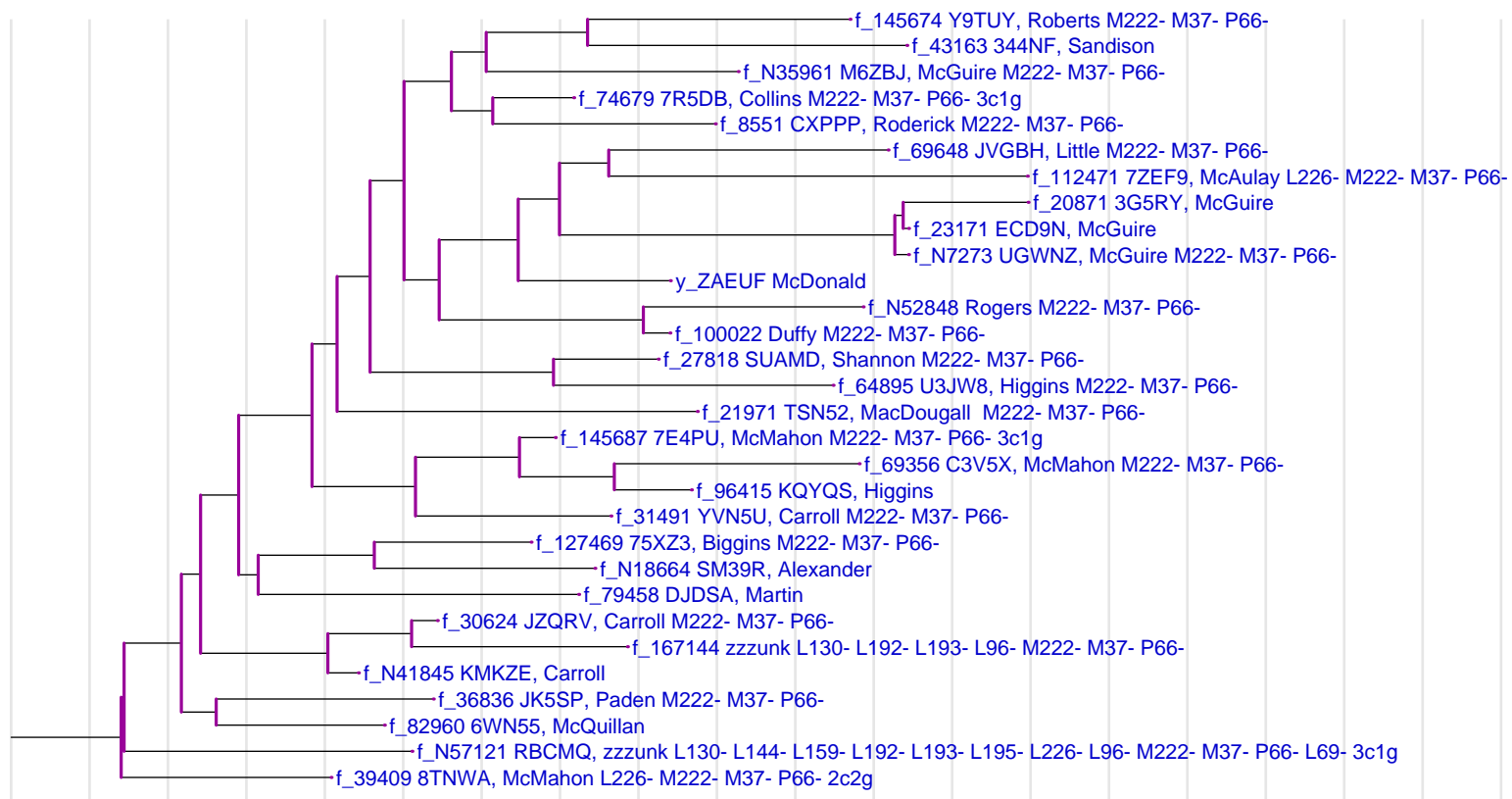
The rule separation is 10 generations.

Scots Cluster



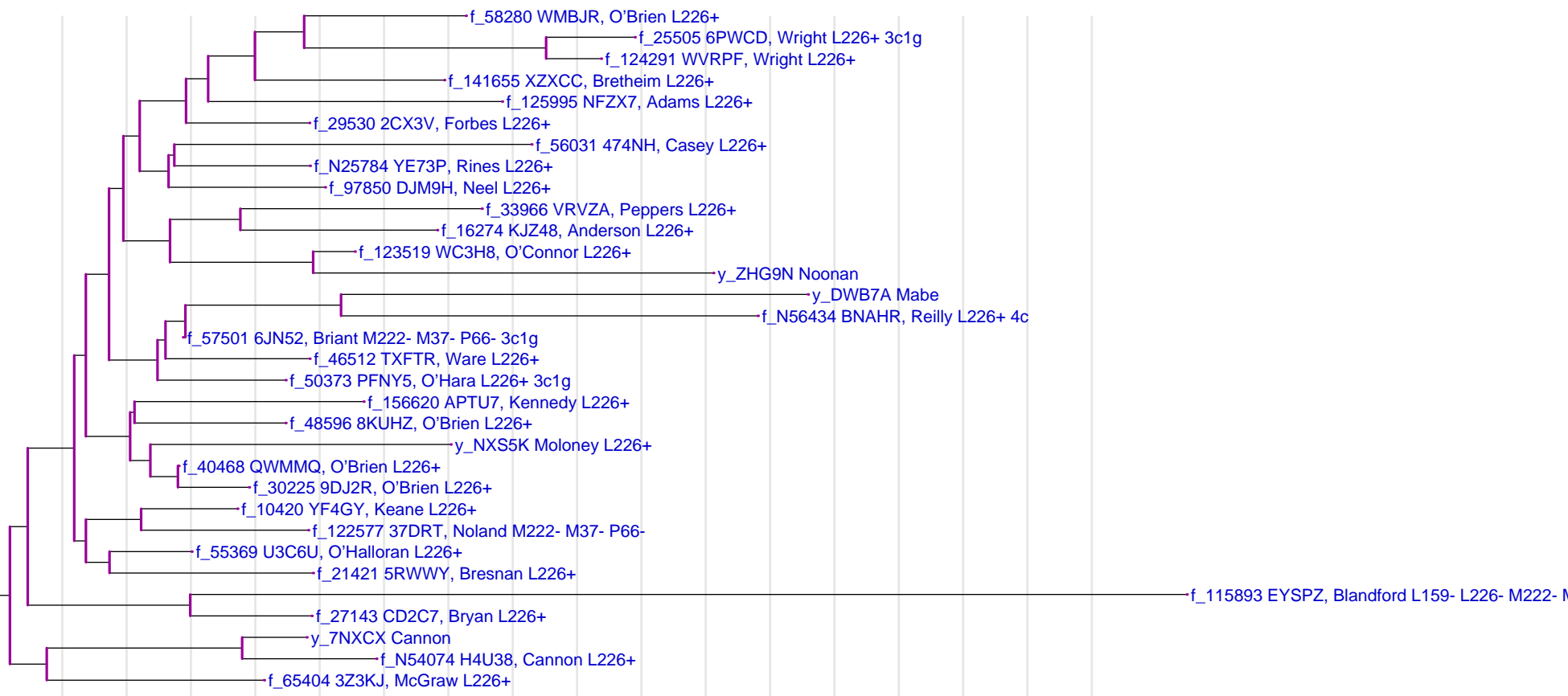
The rule separation is 10 generations.

Clan Colla

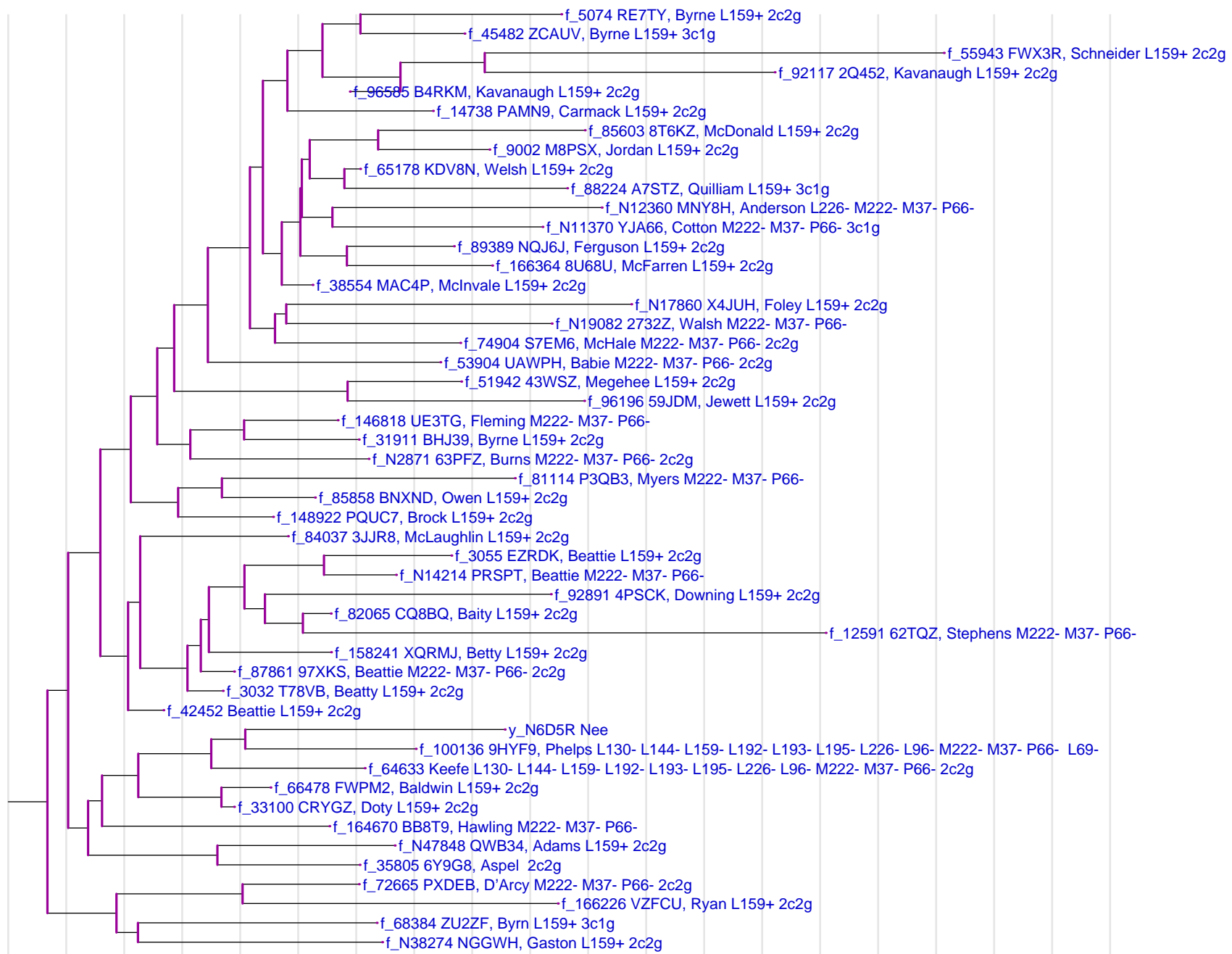


The rule separation is 10 generations.

Irish Type III

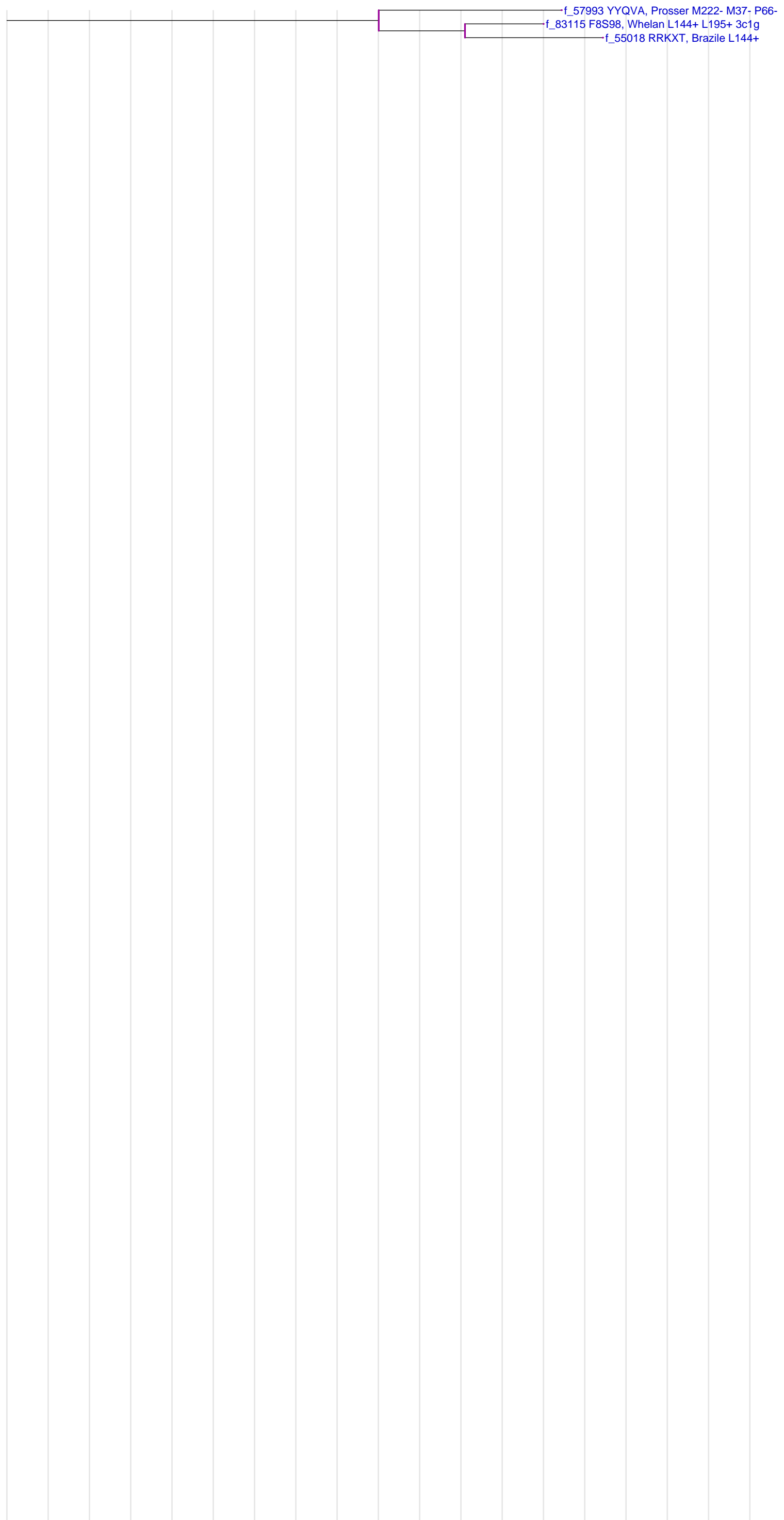


L159+ (maybe a bit more)



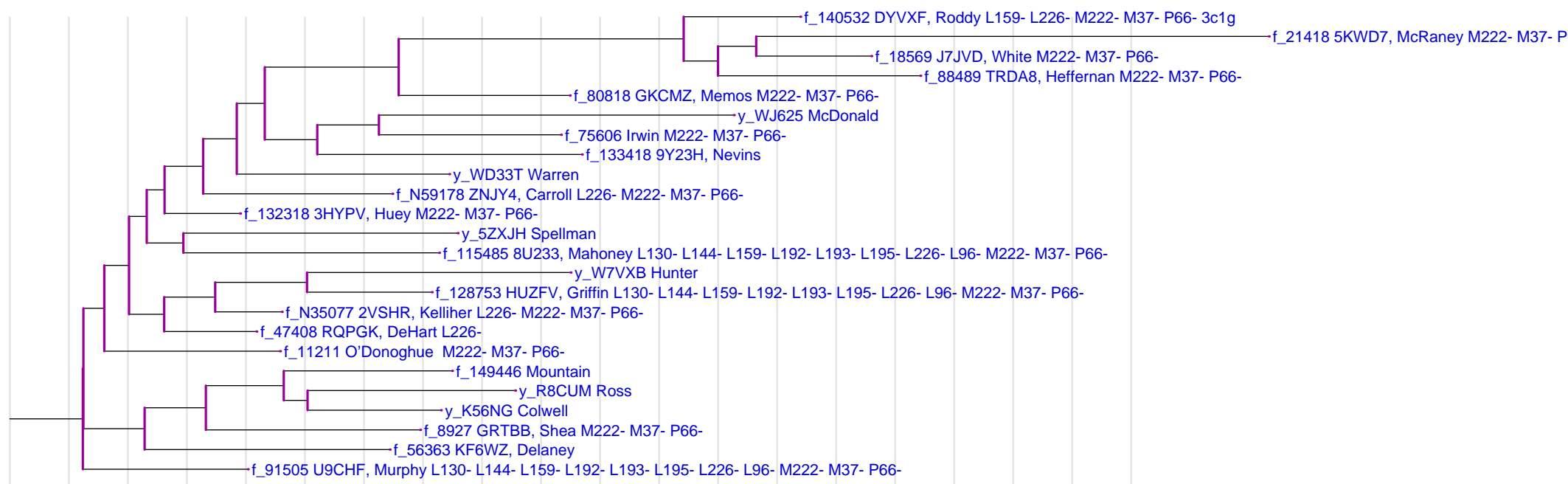
The rule separation is 10 generations.

L144+



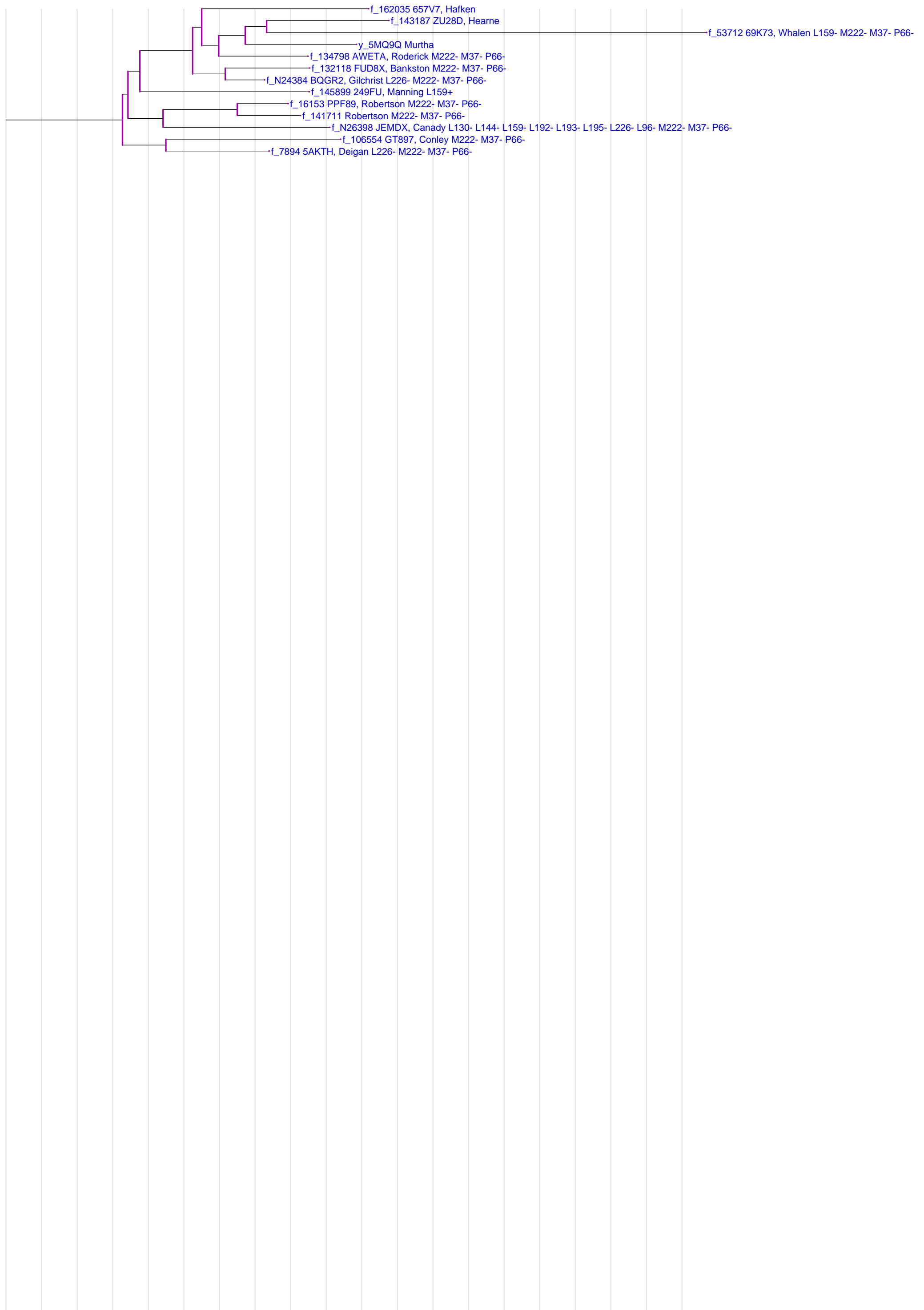
The rule separation is 10 generations.

subset of Variation 1011



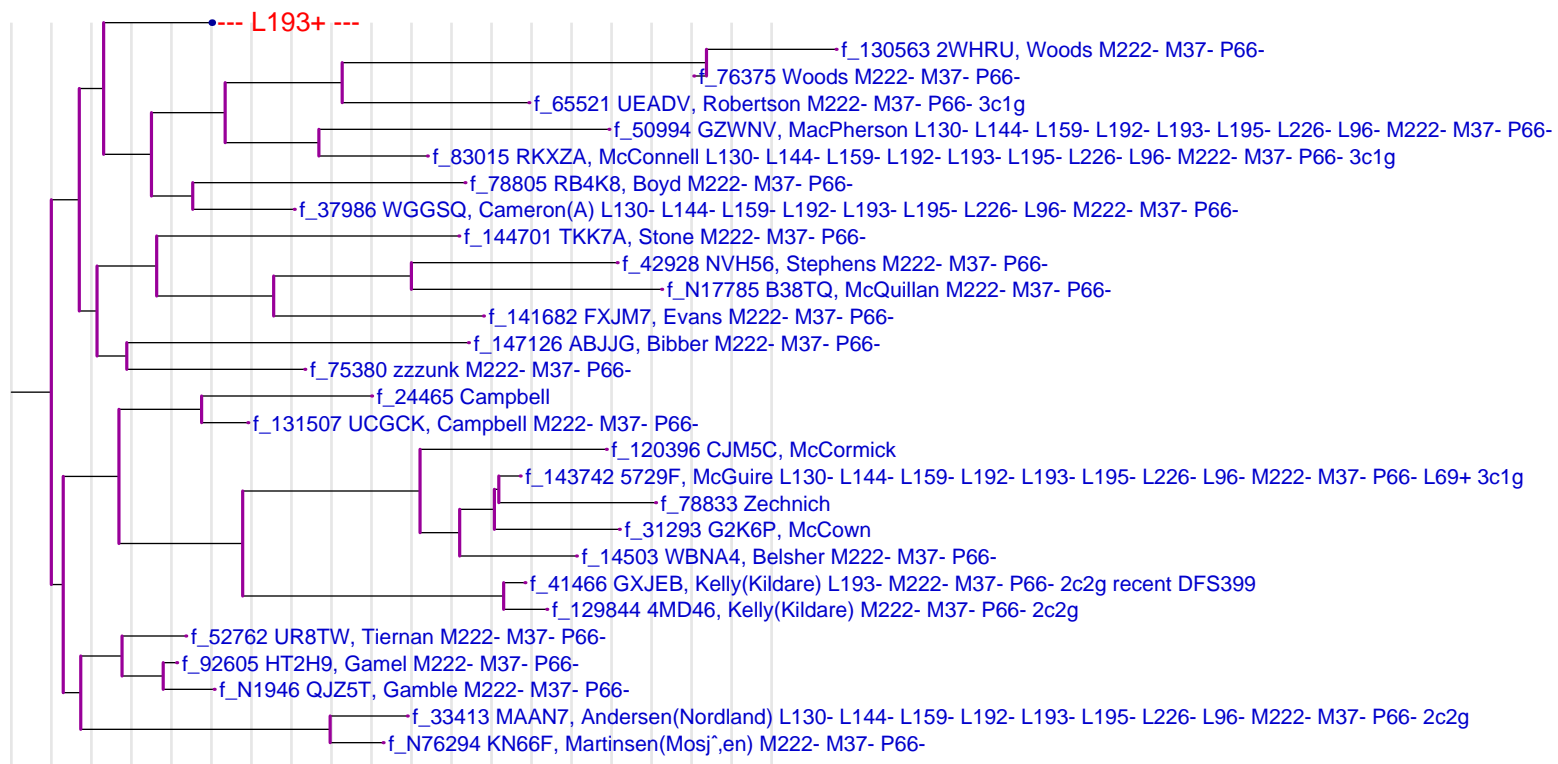
The rule separation is 10 generations.

Variation 1117



The rule separation is 10 generations.

Variation 1113



The rule separation is 10 generations.

L193+

